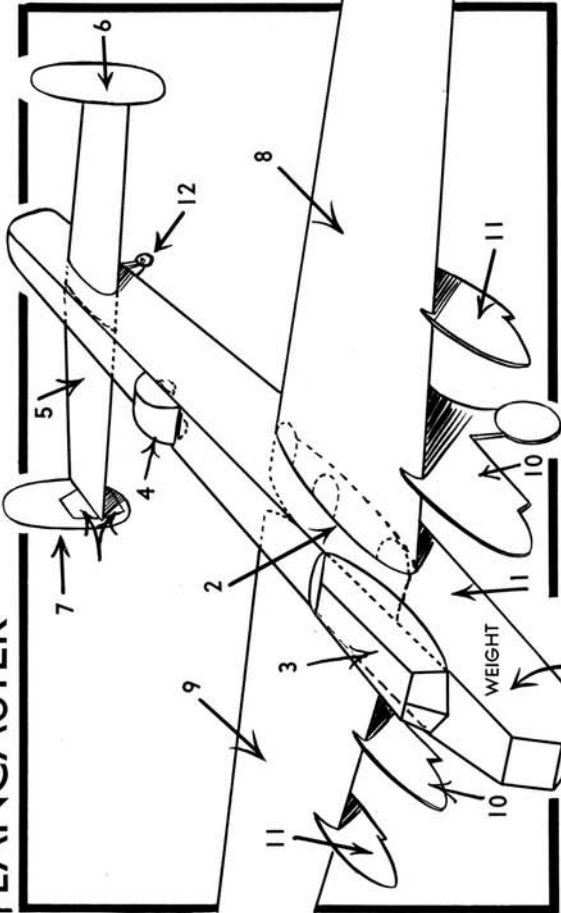


# LANCASTER (BRITISH HEAVY BOMBER)



3 CLIPS

## R. A. F. LANCASTER

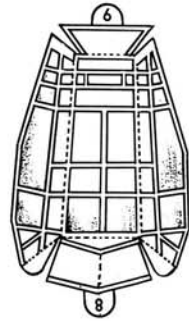
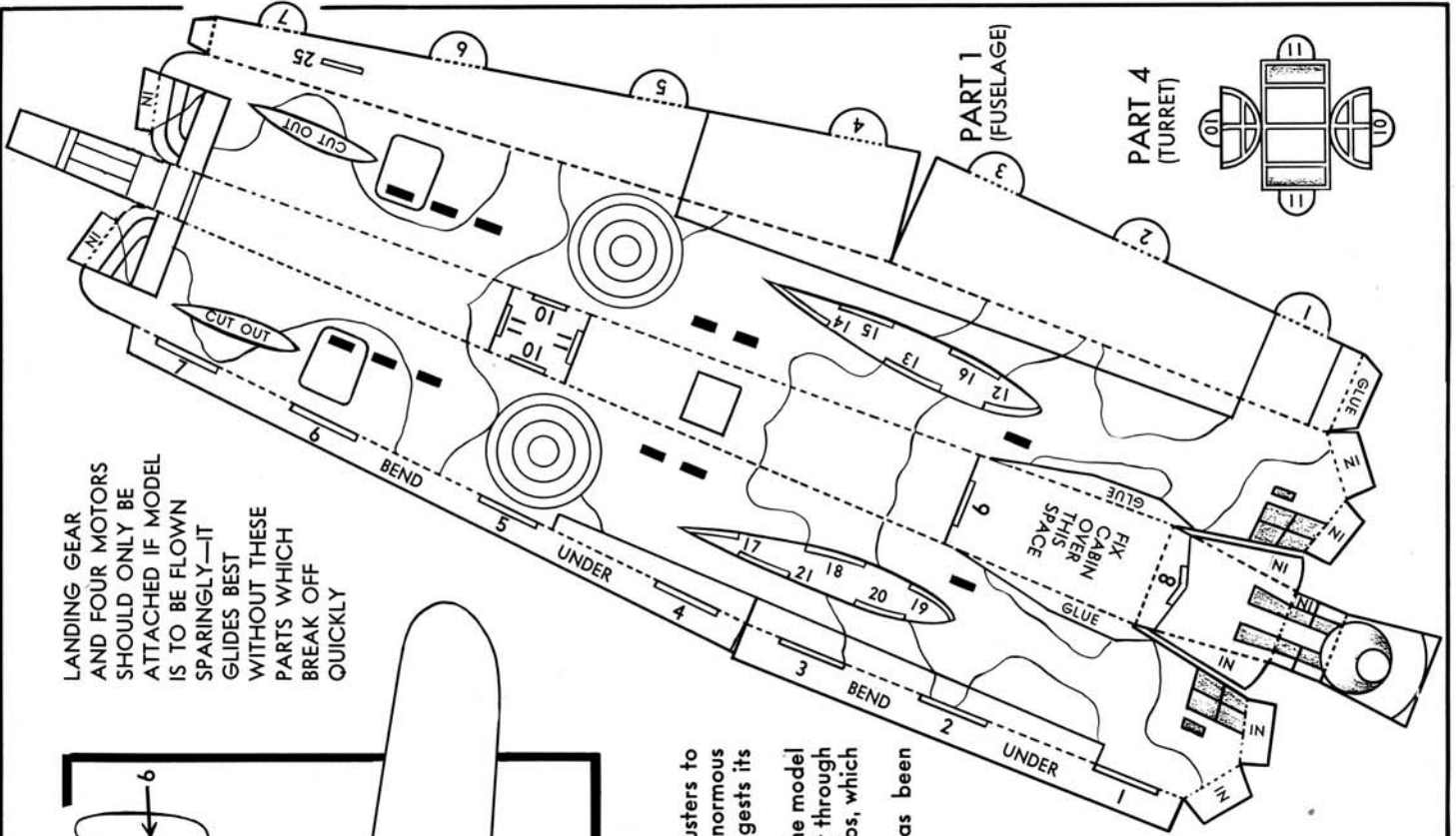
The heavy bomber which delivers the blockbusters to Berlin! This machine has a long range with an enormous bomb load. Severe in line its sinister form suggests its errand—deadly destruction.

For added strength and ease of construction the model has a squared-off fuselage. Attach wings with a slight tilt and pass tail right through to a central position in the slits, then fix the twin rudders to the two pairs of tabs, which are left upright and unglued when tail is being formed.

Stuff nose with tissue and close finally only when adequate weight has been inserted (about two to three heavy clips).

The model performs best without the dummy engines and landing gear. Turn back of tail slightly up if there is a diving tendency.

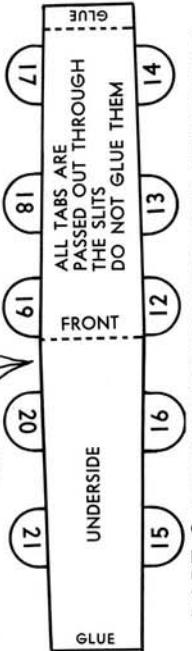
LANDING GEAR AND FOUR MOTORS SHOULD ONLY BE ATTACHED IF MODEL IS TO BE FLOWN SPARINGLY—IT GLIDES BEST WITHOUT THESE PARTS WHICH BREAK OFF QUICKLY



PART 3 (CABIN)

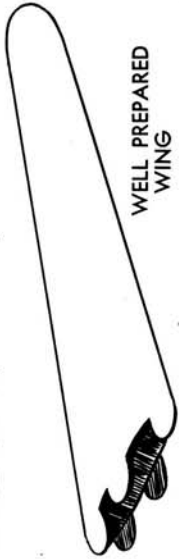


FORM UP SO

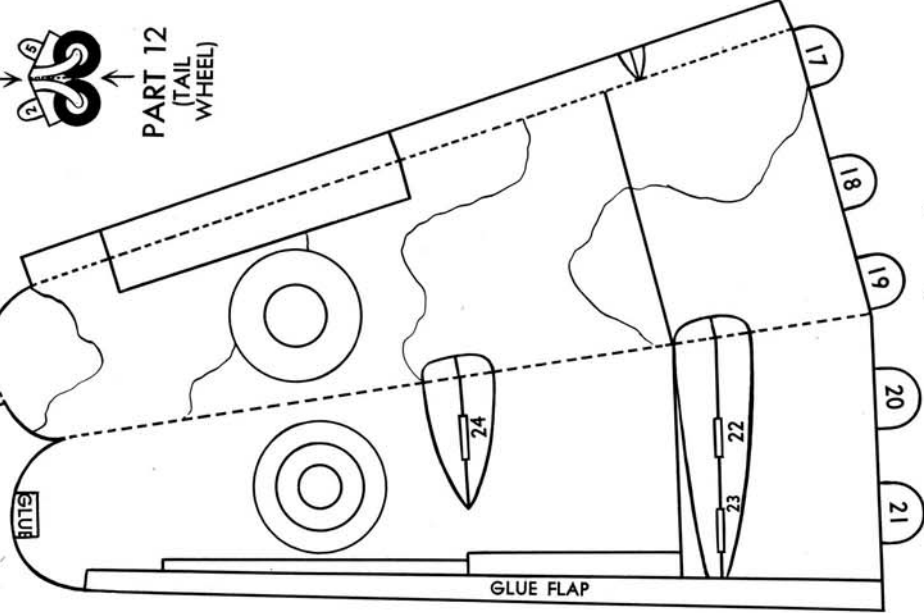


PART 2 (WING CENTER SECTION) GOES INSIDE PART 1

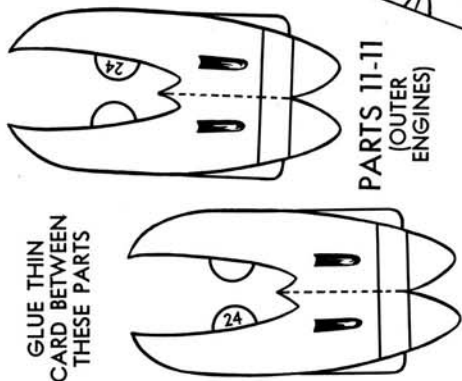
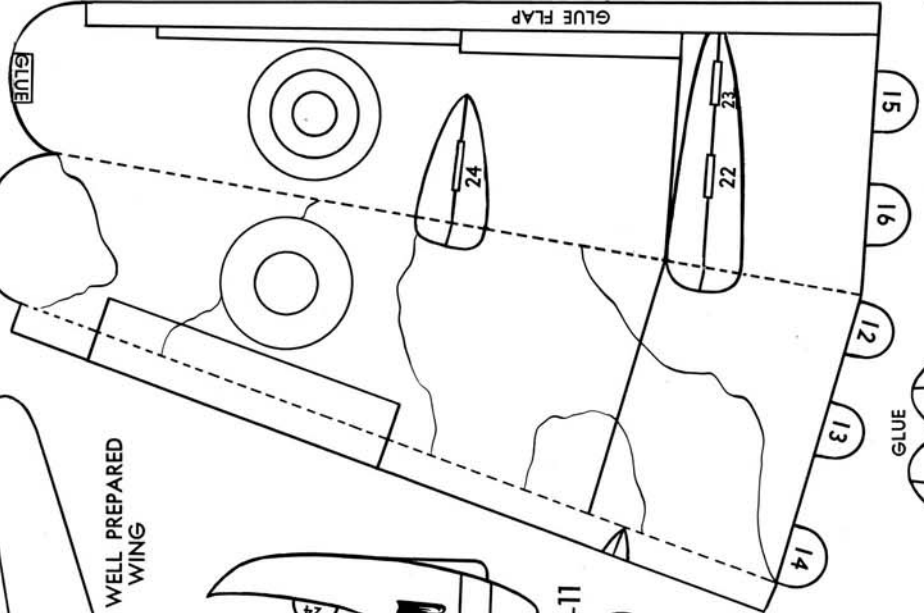
LANCASTER (CONTINUED)



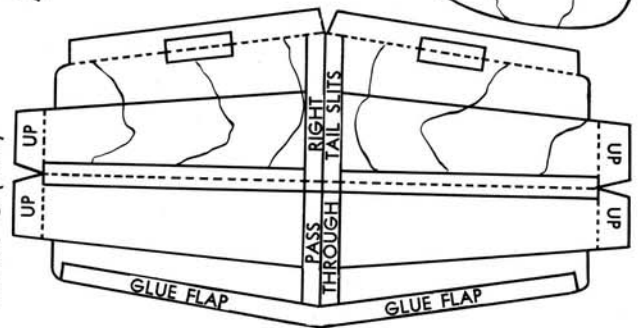
PART 9  
(LEFT WING)



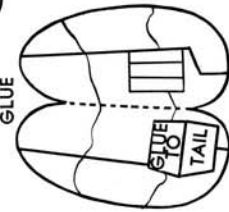
PART 8  
(RIGHT WING)



PART 5 (TAIL)



PART 6  
(RIGHT RUDDER)



PART 7  
(LEFT RUDDER)

